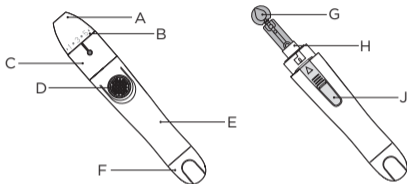


Operation Instruction Manual for Lancing Device

Please read the instructions carefully before using the device

Specification: ALD-602

- | | |
|----------------------|--------------------|
| A. Device Cap | G. Needle Cap |
| B. Proper level | H. Needle Holder |
| C. Connecting Collar | J. Ejection Button |
| D. Release Button | |
| E. Device Body | |
| F. Spring mechanism | |



Work with the lancet, the lancing device is used to collect capillary blood sample. The body and the active parts of the device are made of ABS, POM and PC Resin. And the spring is made of carbon steel. The puncture depth can be adjusted by the five-level adjustment. The bigger the number is, the more is the blood. Please adjust it according the user's skin to reduce the pain.

 ANDON HEALTH CO., LTD.

No. 3 jin ping street, Ya An Road, Nankai District,
Tianjin, 300190, China

 iHealthlabs Europe SAS
36 rue de Ponthieu, 75008, Paris, France

Storage Conditions

Finished products should be stored in dry, ventilated room.
Keep away from any corrosive gas.

Service Life

The service life of lancing device is no more than 5000 times
or 5 years, whichever is first-come.

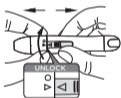


Personal Use Product

Warning:

- Please avoid the accidental injuries to yourself or others when you use the device.
- Keep the lancing device and the lancet away from children.
- When you install the lancet, please do not press the release button if the device cap is removed.
- Please do not keep the lancet in the device after using it.
- Please do not share the device with others or reuse the lancet.
- Please disinfect the device before using it, but do not immerse the device into any liquid.
- Please pull the plug of the device gently to avoid shedding.
- The lancing device should press against the skin vertically and firmly, or it will affect the blood taking.

Instructions for Use



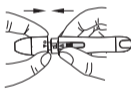
Remove the cap and the connection tube.



Insert the lancet into the holder, and push down firmly until it is fully inserted.



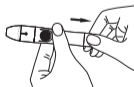
Twist off the protective cap and save it for lancet disposal.



Place the cap and connecting tube back on the device. The depth display window is on the same side as the release button.



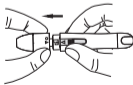
Hold the cap in one hand, and the connector in the other, and adjust it to the proper level (usually 3)



Pull back on the device's spring mechanism.



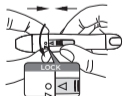
Hold the lancing device firmly and vertically against the collection site, then press the release button.



Remove the cap and the connecting tube and stick the lancet tip into the protective cap.



Push the eject button, and discard the used lancet in an appropriate container.



Replace the cap and the connection tube.