



## Features

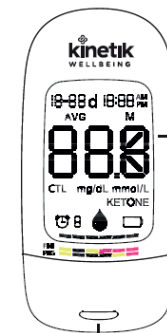
- ✓ Test strips available on NHS prescription & through NHS Supply Chain
- ✓ 500 reading memory
- ✓ Clinically validated to highest accuracy Standard (EN ISO15197:2015)
- ✓ 5 Second measurement time
- ✓ Includes 25x lancets and 25x test strips
- ✓ No coding



## Specifications

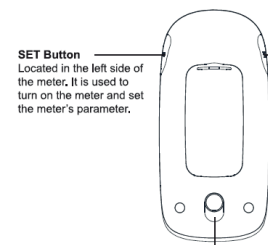
Product name	Blood glucose monitoring system		
Model number	AG-607		
Machine size	4.3" x 2.05" x 0.81" (110mm x 52mm x 20.5mm)		
Measuring method	Amperometric technology glucose dehydrogenase		
Result range	1.1 mmol/L ~ 33.3mmol/L		
Power source	DC3V (AAA x2)		
Storage condition - test strips	Test Strips 4°C~30°C (39°F~86°F). Humidity 10%~80% RH		
Storage condition - the meter	-20°C~55°C (-4°F~131° F), Humidity 10%~80%RH		
Operating conditions	10°C~40°C (50°F~104°F), 25%RH~80%RH		
Blood source	Fresh capillary whole blood		
Blood volume	Minimum 0.7 micro liter		
Life span	Five years		
Performance characteristics	Hematocrit range	20%~60%	
Sample	Whole blood, capillary		
Not less than blood sample size	0.7 µL	Test time	5 Seconds
Calibration	Plasma equivalents		
Chemical components in each test strip	1. FAD- GDH >0.04mg      2. Other ingredients (Electron shuttle, enzyme protector, non-reactive ingredients etc.) >0.05mg		

## Structure



**LCD DISPLAY**  
Glucose test results, Symbols and messages appear here.

**STRIP PORT**  
Insert the test strip into the strip port to automatically turn on the meter.



**SET Button**  
Located in the left side of the meter. It is used to turn on the meter and set the meter's parameter.

**MEM Button**  
Located in the right side of the meter. It is used to turn on the meter and view past test results.

**Eject Button**  
Located on the back side of the meter. It is used to automatically remove the test strip.