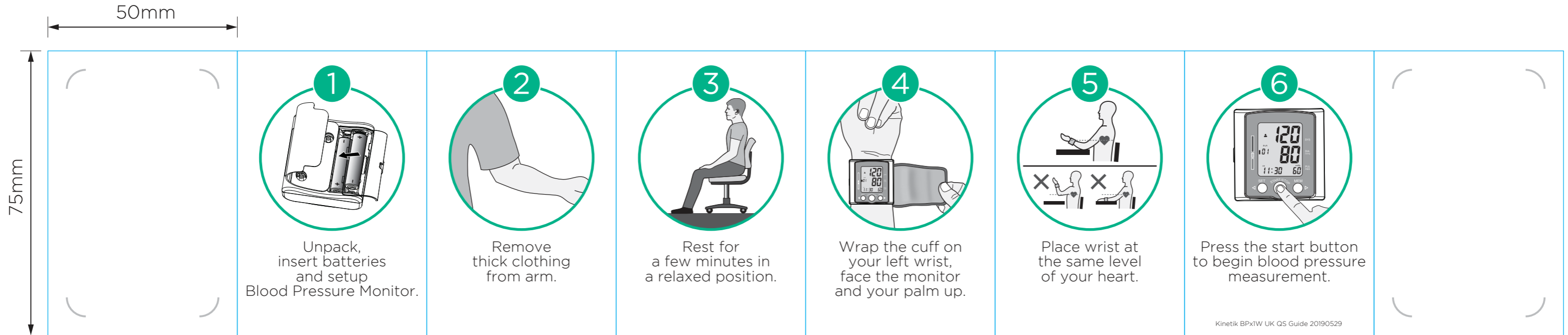


Kinetik BPx1W UK version Quick Start Guide (Double-sided card)
 Size: 50(W) x 75(H) mm [Cover and Back Cover Size: 54(W) x 79(H) mm]
 Date: 20190529(V4) *Revised as per the comments of 2019-05-13 18:34

APPROVED
 By cmlam at 5:44 pm, May 31, 2019

Kinetik Logo Colour : 
 Pantone 382C  **kinetik**
 WELLBEING
 (CMYK reference is C30 M0 Y100 K0)
 Pantone Cool Grey 11 
 (CMYK reference is C44 M34 Y22 K77)

Colour : (Green) Pantone 339C (CMYK reference is C84 M0 Y59 K0) 
 (Black)



Cover



Back Cover